



Company Overview

January 2024



Vision Statement:

Embrace those who respect, honor and value relationships.

Not Just Words! This is key to success of **RITALKA** & our clients.



Outline:

- History
- Organization: Wald Holdings
- Facilities
- The Numbers
- SpecSys, Inc. Clients & Projects
- RVI Clients & Projects
- Integral dx Clients & Projects
- RITALKA Culture Slide



MANAGEMENT SYSTEM CERTIFICATE

Certificate no.: CERT-07148-2006-AQ-HOU-ANAB Initial certification date: 19 September, 2007 Valid: 02 November, 2022 – 10 September, 2025

This is to certify that the management system of
RVI, Inc. / SpecSys/ Integral DX Inc.
121 North First Street, Montevideo, MN, 56265, USA
and the sites as mentioned in the appendix accompanying this certificate

has been found to conform to the Quality Management System standard:
ISO 9001:2015

This certificate is valid for the following scope:
Provide Services to Clients that include: Contract Manufacturing, Design Engineering, Fabrication, Machining, Welding, Assembly, Painting, Repair & Renewal of Electronic Products, Test development & testing of Electronic Products, Battery Management, Wire Harness & Control Box manufacturing & Assembly as well as Intelligent Inventory Management

Place and date:
Katy, TX, 02 November, 2022



For the issuing office:
DNV - Business Assurance
1400 Ravella Drive, Katy, TX, 77449-6164, USA

Sherif Mekki
Management Representative

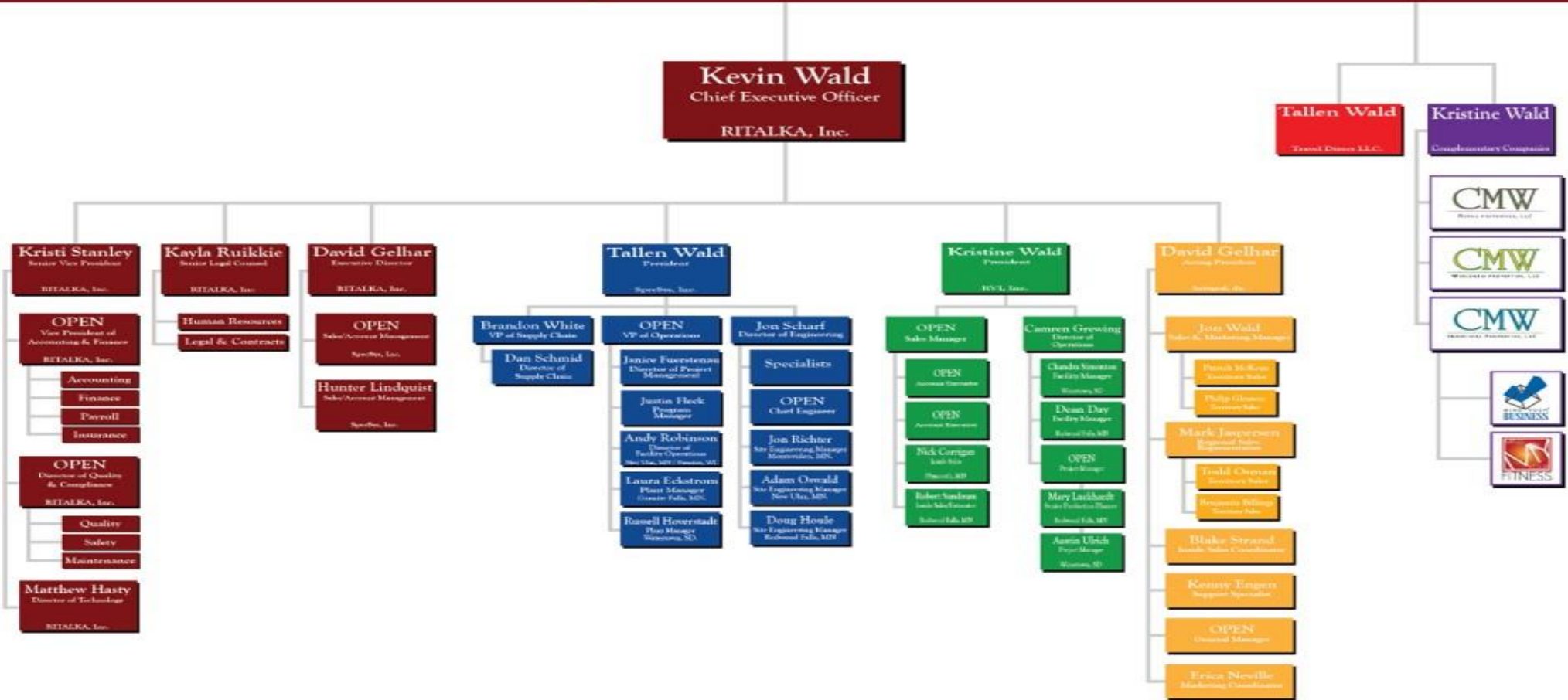
Lack of fulfillment of conditions as set out in the Certification Agreement may render this Certificate invalid.
ACCREDITED UNIT: DNV Business Assurance USA Inc., 1400 Ravella Drive, Katy, TX, 77449, USA - TEL: +1 281-396-1000, www.dnv.com

History:

- 1997: **RITALKA, Inc.** & **SpecSys Inc.** founded.
- 1999: Acquisition of **Ingram Rollers Inc.**
- 1999: **SpecSys** adds manufacturing capabilities
- 2001: Minnesota River FLOODS; Geese at the front door
- 2002: **SpecSys** expansion of 110,000 ft², Granite Falls, MN
- 2003: Sale of **Ingram Rollers Inc.** inventory and intellectual property
- 2005: **SpecSys** expansion of 15,000 ft², Redwoods Falls, MN
- 2007: Launch **RVI, Inc.**, Redwood Falls, MN
- 2008: **SpecSys** expansion of 83,000 ft², Benson, MN
- 2012: **SpecSys** expansion of 65,000 ft², New Ulm, MN
- 2012: **SpecSys** offices expansion Cloquet, MN
- 2013: Launch of **Integral dx Incorporated**
- 2013: Launch of **SpecSys6**, Engineering Brand
- 2015: **SpecSys & RVI** expansion of 120,000 ft², Watertown, SD
- 2016: **SpecSys** expansion of 210,000 ft², Prentice, WI
- 2019: Expansion offices, Plymouth, MN
- 2019: **Integral dx** acquisition of Easi-Miner
- 2020: **Integral dx** acquisition of Schwing Concrete Mixer
RVI expands into Wire Harness Production
- 2023: **Integral dx** Re-Acquisition of **Ingram Rollers**
Integral dx development of EV Redi-Mix
Integral dx development of Switcher Locomotive



Wald Holdings: Kevin R. & Colleen M. Wald



 **RITALKA, INC.**

Jan 2024



Facilities:



The Numbers:

- 7 Locations, 4 US States
 - 675,000 ft² under roof
- 275+ employees
 - 5,000 hours per month engineering services
 - 25,000 hours per month heavy manufacturing services
 - 8,000 hours per month electronic, battery & wire harness related services
- All operations are ISO-9001:2015 certified
 - **SpecSys, Inc.:** Agriculture, Railway, Construction, Mining, Utilities, Oil & Energy, Forestry, Material Handling
 - **RVI, Inc.:** Mobile Equipment, Consumer Electronics, Commercial Electronics
 - **Integral dx Inc.:** Concrete, Asphalt, Utilities, Mining, Agriculture



SpecSys Offering:

- 2 CNC laser burn tables
- 4 CNC plasma & oxy burn tables
- 3 CNC metal sheet and/or plate rolls
- 6 CNC Press Brakes (up to 400 ton)
- 22 CNC Machining Centers (100,000 lb. gantry machining center)
- 15 Semi-automated bridge ports, mills, and lathes
- 7 industrial size metal fabrication band saws
- 2 large tonnage stamp presses
- 7 automation and/or robotic weld stations
- 125 MIG and/or TIG welding machines (AWS Certified Staff)
- 5 Sub-arc weld machines
- 275 jib hoists
- 18 large tonnage full span bridge cranes
- 4 paint prep blast booths
- 4 paint prep wash bays
- 7 paint booths & 1 paint oven
- 2 PLC Machinery Cycle Test Stands with hydraulic power packs
- 2 mobile data acquisition testers with hundreds of sensors.



SpecSys Projects:

Agriculture & Forestry

Turn-key projects where several of these involved large volume quantities delivered over several years of continued production.



SpecSys Projects:

Construction & Mining

Blast Hole Drill required 11 semi trucks to deliver.
Conveyor deliveries of 3 to 5 per week for several months.
Several hundred concrete and compaction units delivered.



SpecSys Projects:

Railway & Utilities

Turn-Key engineering with fully vertically integrated manufacturing, says it all here.



RVI Inc. Offering

The heart of
SERVICE



RVI Inc. Offering

Over 140,000 units tracked to the serial number, referred to as **Intelligent Inventory Management**. RVI not only knows the part number, but also tracks design revision level, software and firmware revision levels, country of origin, lead or no lead (ROHS), on EVERY unit.



I²M
Intelligent
Inventory
Management



Electronic Repair & Mfg

- 100% digital repair & production



Automated Testers:

- Custom Built
- LabVIEW Software
- VXI Hardware
- Referred to as **RATE**
 - RVI
 - Automated
 - Test
 - Equipment

RVI Inc. Offering



Battery Management:

- Custom built automated testers
- Lights out automated design performance
- Fully documented and controlled designs to support all Geo locations
- Work instructions per defined business rules
- Saved test data, service date codes, number of recharge times
- Relationship established with battery supplier
- Inventory management: handling, packaging, labeling, storing, replacing, recycling
- Receiving / Warehousing / Processing / Shipping Instructions



RVI Inc. Offering

Wire Harness Manufacturing

- Schleuniger wire cutting & stripping
- Molex pneumatic crimping
- TE automated terminating
- STAPLA ultrasonic splice welding
- Braiding and looming equipment
- Heat shrinking
- Schleuniger 16-character wire printing
- Cirrus automated testing
- Pull testing



Integral dx: Products

Integral dx market, sells, and services the Wald Owned Intellectual Property products, all Wald owned at the request of SpecSys Clients.



Switcher Locomotive

Pneumatic Static Compaction



Spray Paver



All Terrain "Drilly Goat"



Sugar Beet Piler



Fifth Largest Redi-Mix OEM in USA



Redi-Mix Concrete Truck



Coal Surface Miner



RITALKA, INC.

Vision Statement: Embrace those who respect, honor, and value relationships.





The materials in this presentation have been prepared by the Ritalka family of brands and reasonable efforts have been made to ensure the accuracy of the policies, price points, dates, conditions and information provide herein as of the date of the presentation.

© 2020 Ritalka Inc. All Rights Reserved.

