



Custom cable and
wire harness assembly
capabilities

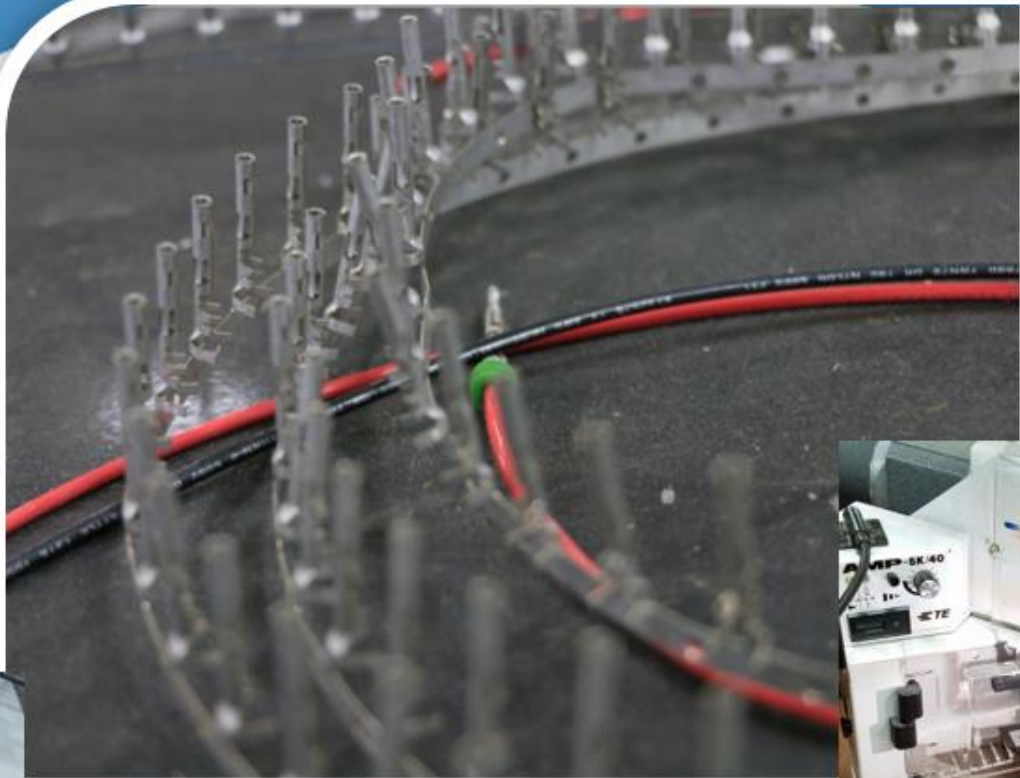


Two locations:
✓ 304 Industrial Drive
Redwood Falls, MN 56283
✓ 600 Quadee Drive
Watertown, SD 57201

P: 320.269.3227



✓ Schleuniger: Cutting / Stripping / Labeling



✓ Molex Pneumatic & TE Automated Terminating



STAPLA ultrasonic splice welding



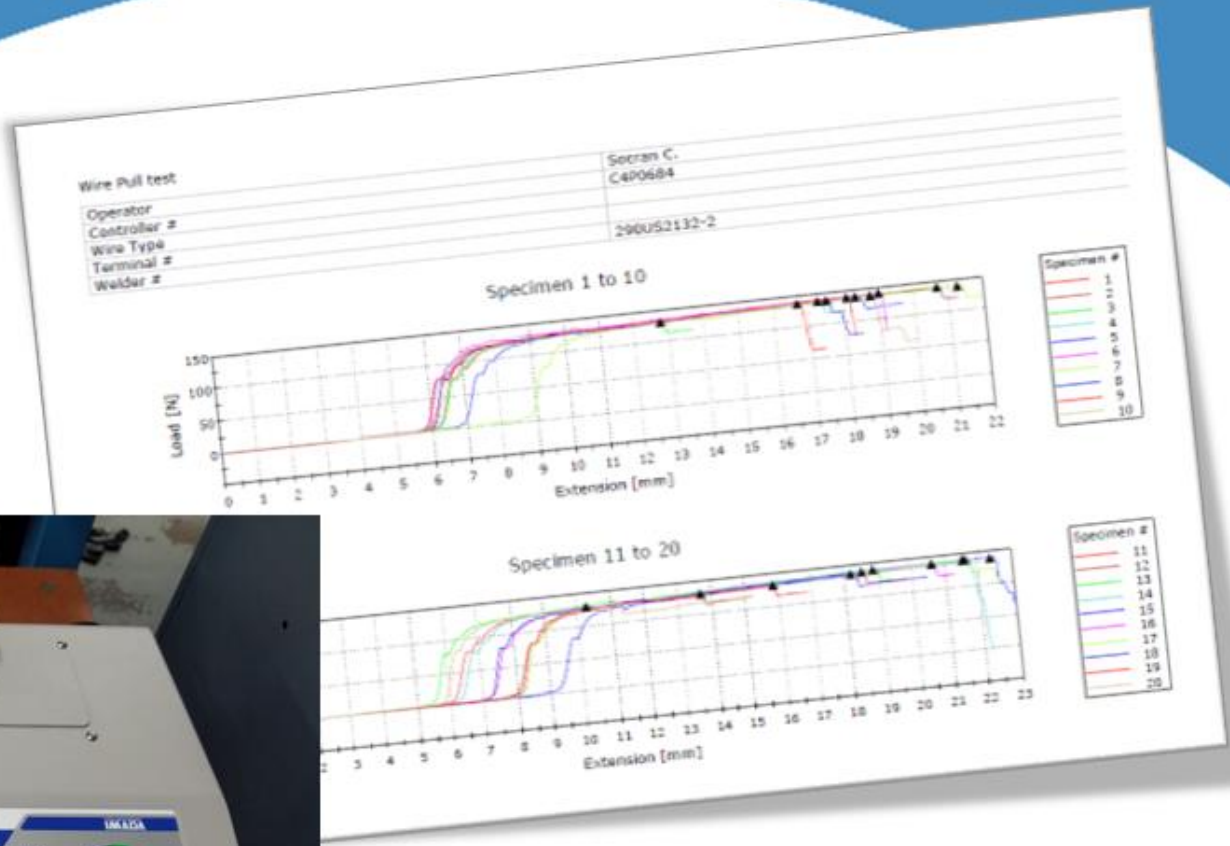
✓ ISO Process Controlled Board Layouts



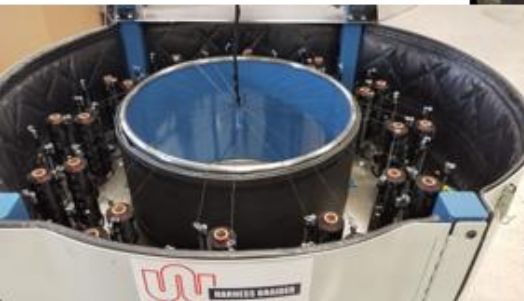
✓ ISO Controlled Crimping Tools

RVI TERMINAL P/N	MANUFACTURER TERMINAL P/N	TERMINATION LOCATION	WIRE AWG	MANUFACTURER	HAND CRIMPER MFG ID	HAND CRIMPER RVI ID	HAND CRIMPER LOCATION	APPLICATOR	CRIMP DIE LOCATION	TE APPLICATOR	MFG APPLICATOR ID	APPLICATOR LOCATION	WIRE STRIP LENGTH	CRIMP HEIGHT MI	CRIMP HEIGHT M	PULL TEST LBS.
0460-202-16141	0460-202-16141	WATE02	16-20	DEUTSCH/TE	HDT-1561	M27400	WTC033	N/A	N/A	N/A	N/A	N/A	.250-.312	0.043	0.047	25
0460-204-12141	0460-204-12141	WATE04	12-14	DEUTSCH/TE	HDT-1561	M27400	WTC033	N/A	N/A	N/A	N/A	N/A	.222-.284	0.068	0.072	30
0462-201-16141	0462-201-16141	WATE01	16-20	DEUTSCH/TE	HDT-1561	M27400	WTC033	N/A	N/A	N/A	N/A	N/A	.250-.312	0.043	0.047	25
0462-203-12141	0462-203-12141	WATI31	12-14	DEUTSCH/TE	HDT-1561	M27400	WTC033	12N .068	N/A	N/A	N/A	N/A	.222-.284	0.068	0.072	30
0462-209-16141	0462-209-16141	WATE05	14	DEUTSCH/TE	HDT-1561	M27400	WTC033	N/A	N/A	N/A	N/A	N/A	.250-.312	0.043	0.047	25
1062-12-0166	1062-12-0166	WATE08	14-12	DEUTSCH/TE	HDT-1561	M27400	WTC033	N/A	N/A	N/A	N/A	N/A	.250-.300	12 AWG-.078 14 AWG-.068	12 AWG-.081 14 AWG-.071	30
1062-16-0144	1062-16-0144	WATF02	14-18	DEUTSCH/TE	HDT-1561	M27400	WTC033	N/A	N/A	N/A	N/A	N/A	.150-.200	14 AWG-.053 16 AWG-.048 18 AWG-.047	14 AWG-.056 16 AWG-.051 18 AWG-.050	25
BAD-2088-510011	12124587	WATN04	12	DEUTSCH/TE	HDT-1561	M27400	WTC033	N/A	N/A	N/A	N/A	N/A	.185-.201	0.075	0.079	56 LBS
BAD-2088-510021	12124582	WATJ14	14-16	DEUTSCH/TE	HDT-1561	M27400	WTC033	N/A	N/A	N/A	N/A	N/A	.187-.217	0.053	0.057	28 LBS
BAD-2088-510031	12089040	WATO08	18-20	DEUTSCH/TE	HDT-1561	M27400	WTC033	N/A	N/A	N/A	N/A	N/A	0.312	0.041	0.045	18 AWG-20 20 AWG-13

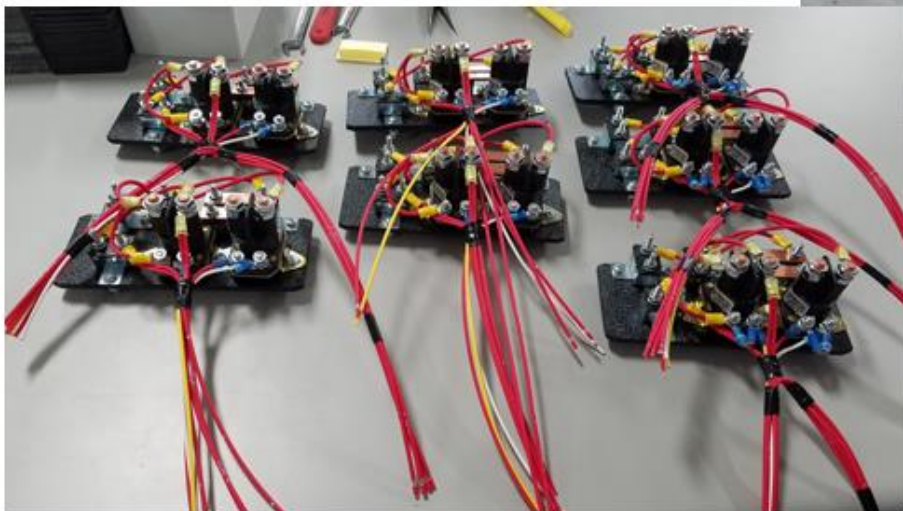




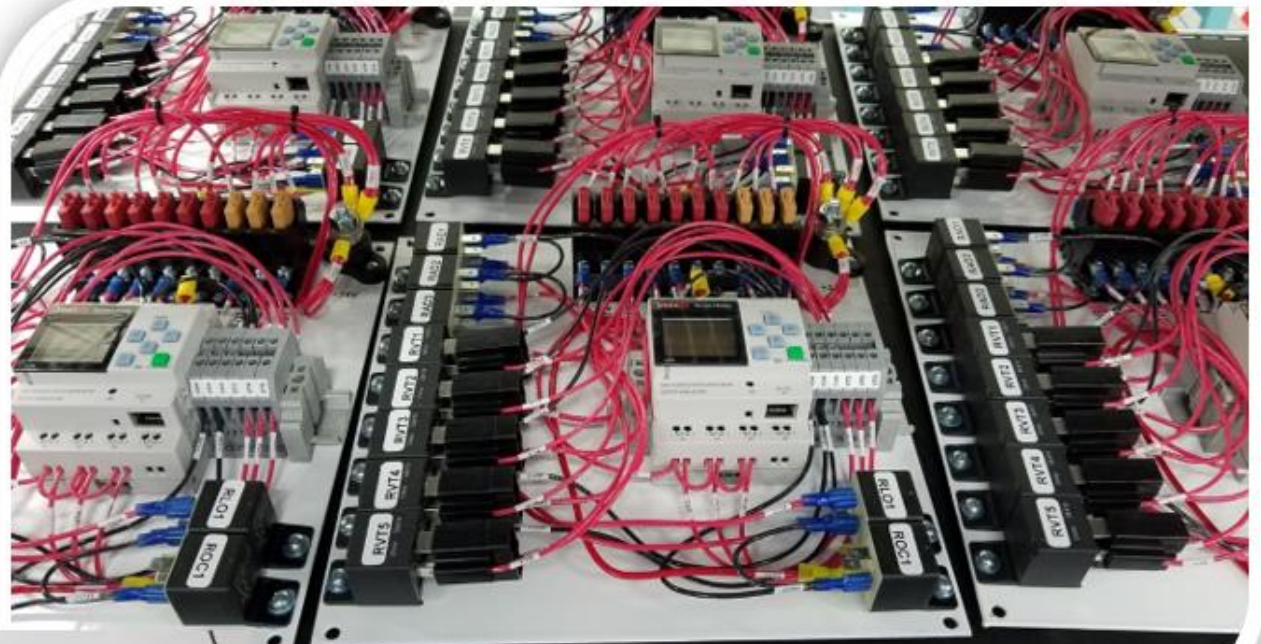
✓ Pull Testing



✓ Mesh Braiding



✓ Misc. Assemblies



✓ Control Box Assembly



Title: Electrical Test Report -Final

Company: RVI-Inc
Address 1: 600 Quadee Drive
City: Watertown, SD
Zip Code: 57201
Phone Number: 320-269-3227
URL: www.rvi-inc.com

Operator: JessicaO
S/N: 6.6E+12
Final Test Result: Passed
Test Date: 8/7/2019
Test Time: 8:55:36 AM
Test Name: Customer ABC123 Rev C
Lot ID: 660301

#	From Pair	To Points	Value Me:	Value Exp	Instruction Type
1	\$J1-1	\$J2-1	1.0 Ohm	5.0 Ohm	WIRE
2	\$J1-1	\$J3-1	0.9 Ohm	5.0 Ohm	WIRE
3	\$J1-1	\$J4-1	1.0 Ohm	5.0 Ohm	WIRE
4	\$J1-1	\$J5-1	0.9 Ohm	5.0 Ohm	WIRE
5	\$J1-1	\$J6-1	0.9 Ohm	5.0 Ohm	WIRE
6	\$J1-1	\$J8-1	0.9 Ohm	5.0 Ohm	WIRE
7	\$J1-1	\$J9-1	0.9 Ohm	5.0 Ohm	WIRE
8	\$I1-1	\$I11-2	1.0 Ohm	5.0 Ohm	WIRE



✓ Cirris Automated Testing



✓ Tested labeled and packaged